

沉浸式英文 109-2

Theme I:校園樹木(春)

Title: 陳澄波---作家簡介 & 畫作認識

週數 (wks)	日期 (Dates)	主題 (Titles)	備註 (nts)
1.	110.02.24	陳澄波---作家簡介 & 畫作認識	人物介紹

Q & A

- Q1. : Who is he/she? Who are you?
- Q2. : What's his/her/your name?
- Q3. : What was he/she? What are you?
- Q4. : Where was he/she born? Where were you born?
- Q5. : When was he/she born? When were you born?
- Q6. : Whose work is it?
- Q7. : Who drew it?
- Q8. : Where can you see the picture?
- Q9. : How do you like the picture?
- Q10.: Why do/don't you like the picture?



陳澄波
chen chengbo



嘉義市立博物館:【光影的旅行者-陳澄波百二互動展】

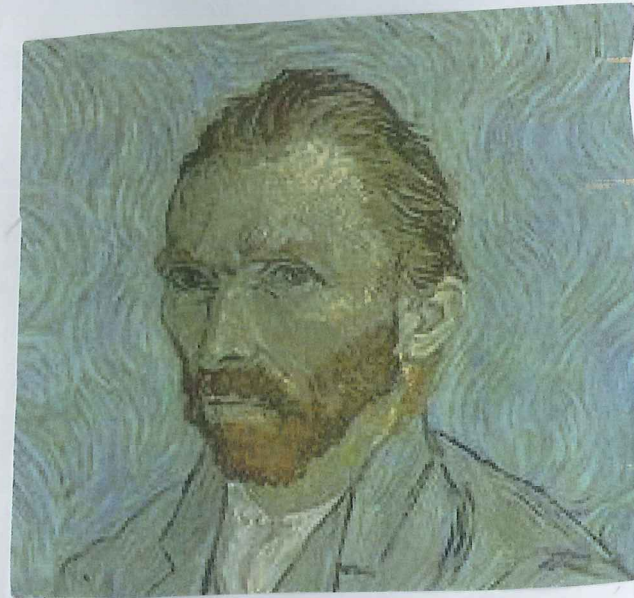
陳澄波	嘉義市立博物館:【光影的旅行者-陳澄波百二互動展】

Q1. : Who is he? HES 陳澄波	Q6. : Whose work is it? 陳澄波
Q2.: What's his name? ACES 陳澄波	Q7. : Who drew it? 陳澄波
Q3.: What was he? he was born in	Q8. : Where can you see it? C
Q4.: Where was he born? He was born in Taiwan	Q9. : How do you like it?
Q5. : When was he born?	Q10.: Why do/don't you like it?

Work Sheet 工作單

Date(日期): 110.03.03 組別(Team): Jimmy 姓名(names): Jimmy

- Please follow above and introduce the artist and his/her work by yourself.



Q1. : Who is he? 谷	Q6. : Whose work is it? 谷
Q2.: What's his name? 谷	Q7. : Who drew it? 谷
Q3.: What was he? artist	Q8. : Where can you see it? 谷
Q4.: Where was he born? 谷	Q9. : How do you like it? I like very much
Q5. : When was he born? 1890	Q10.: Why do/don't you like it? It's very beautiful

沉浸式英文 109-2

Theme I: 校園樹木(春)

Title: 陳澄波---作家簡介 & 畫作認識

週數 (wks)	日期 (Dates)	主題 (Titles)	備註 (nts)
1.	110.02.24	陳澄波---作家簡介 & 畫作認識	人物介紹

Q & A

- Q1. : Who is he/she? Who are you?
- Q2. : What's his/her/your name?
- Q3. : What was he/she? What are you?
- Q4. : Where was he/she born? Where were you born?
- Q5. : When was he/she born? When were you born?
- Q6. : Whose work is it?
- Q7. : Who drew it?
- Q8. : Where can you see the picture?
- Q9. : How do you like the picture?
- Q10.: Why do/don't you like the picture?

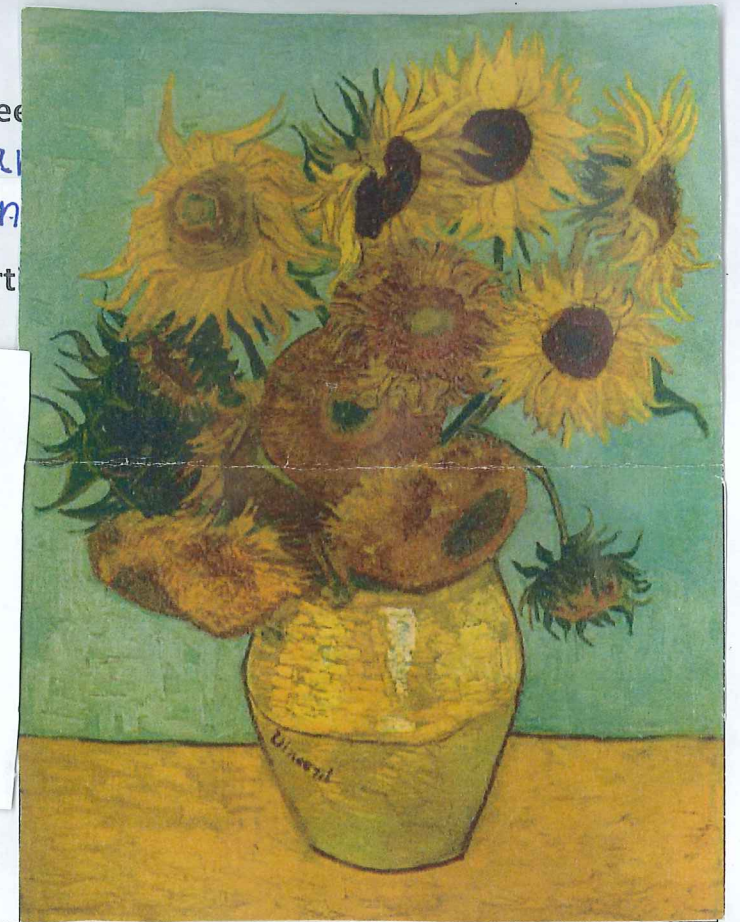


Q1. : Who is he?	Q6. : Whose work is it?
He's my favorite artist	He's 陳澄波
Q2.: What's his name?	Q7. : Who drew it?
He's 陳澄波	He's 陳澄波 drew it.
Q3.: What was he?	Q8. : Where can you it?
He was an artist.	I can see it in the museum
Q4.: Where was he born?	Q9. : How do you like it?
台灣	I like it very much
Q5. : When was he born?	Q10.: Why do/don't you like it?
1895	It's very beautiful.

Work Sheet

Date(日期): 110.3.3 組別(Team): Lillian

- Please follow above and introduce the art



Q1. : Who is he?	Q6. : Whose work is it?
He's my favorite artist. He's 梵谷	He's 梵谷
Q2.: What's his name?	Q7. : Who drew it?
He's 梵谷	He's 梵谷
Q3.: What was he?	Q8. : Where can you see it?
He was artist	Museum
Q4.: Where was he born?	Q9. : How do you like it?
荷蘭	I like it.
Q5. : When was he born?	Q10.: Why do/don't you like it?
1890年	I like it.

Theme I: 校園樹木(春)

Title: 陳澄波---作家簡介 & 畫作認識

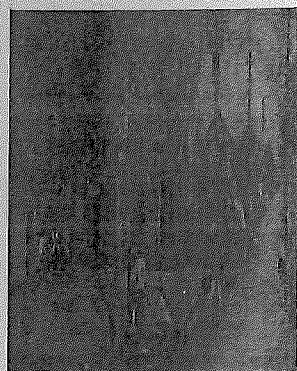
週數 (wks)	日期 (Dates)	主題 (Titles)	備註 (nts)
1.	110.02.24	陳澄波---作家簡介 & 畫作認識	人物介紹

Q & A


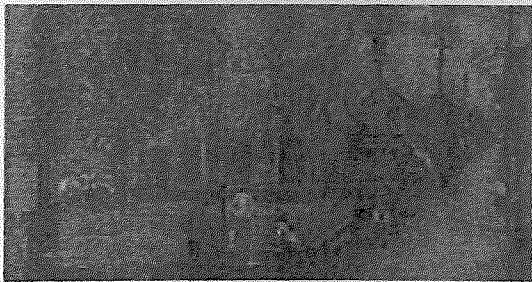
- Q1.: Who is he/she? Who are you?
- Q2.: What's his/her/your name?
- Q3.: What was he/she? What are you?
- Q4.: Where was he/she born? Where were you born?
- Q5.: When was he/she born? When were you born?
- Q6.: Whose work is it?
- Q7.: Who drew it?
- Q8.: Where can you see the picture?
- Q9.: How do you like the picture?
- Q10.: Why do/don't you like the picture?



陳澄波
chen chengbo



嘉義市立博物館: 光影的旅行者-陳澄波百二五畫展
edamomoku


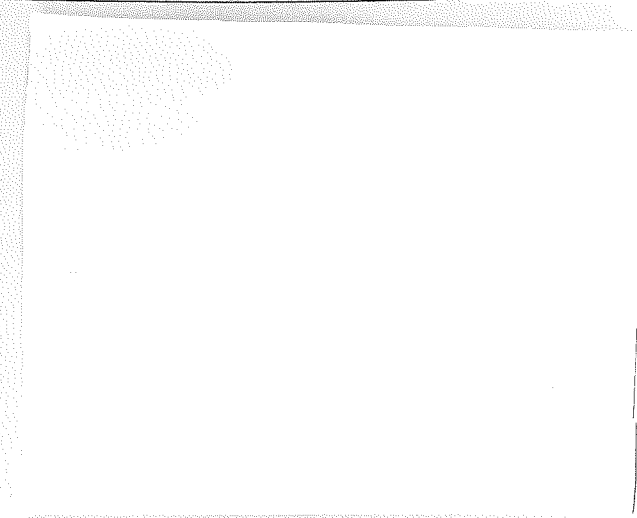
	
陳澄波	嘉義市立博物館: 光影的旅行者-陳澄波百二五畫展

Q1.: Who is he? He's my favorite artist.	Q6.: Whose work is it? It's Chen Chengbo's work.
Q2.: What's his name? He's Chen Chengbo.	Q7.: Who drew it? Chen Chengbo drew it.
Q3.: What was he? He was an artist.	Q8.: Where can you see it? I can see it in the museum.
Q4.: Where was he born? He was born in Taiwan.	Q9.: How do you like it? I like it very much.
Q5.: When was he born? He was born 1895.2月2日	Q10.: Why do/don't you like it? It's very beautiful.

he was born 1895.2月2日 It's very beautiful

Date(日期): 110.3.3 組別(Team): 2 姓名(names): Joy

- Please follow above and introduce the artist and his/her work by yourself.

	
Q1.: Who is he? He is my favorite artist.	Q6.: Whose work is it? It's Chen Chengbo's work.
Q2.: What's his name? He's Chen Chengbo.	Q7.: Who drew it? Chen Chengbo.
Q3.: What was he? He was an artist.	Q8.: Where can you see it? In the museum.
Q4.: Where was he born? Spain.	Q9.: How do you like it? I like it very much.
Q5.: When was he born? 1881.10.25.	Q10.: Why do/don't you like it? It is beautiful.

He was born 1881.

沉浸式英文 109-2

Theme I: 校園樹木(春)

Title: 陳澄波---作家簡介 & 畫作認識

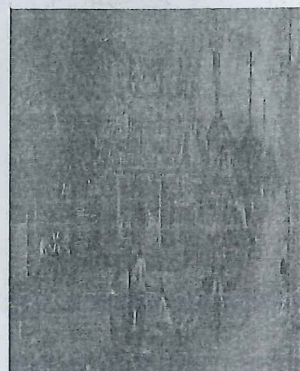
週數 (wks)	日期 (Dates)	主題 (Titles)	備註 (nts)
1.	110.02.24	陳澄波---作家簡介 & 畫作認識	人物介紹

Q & A

- Q1. : Who is he/she? Who are you?
- Q2. : What's his/her/your name?
- Q3. : What was he/she? What are you?
- Q4. : Where was he/she born? Where were you born?
- Q5. : When was he/she born? When were you born?
- Q6. : Whose work is it?
- Q7. : Who drew it?
- Q8. : Where can you see the picture?
- Q9. : How do you like the picture?
- Q10.: Why do/don't you like the picture?



陳澄波
國立歷史博物館



臺南市立博物館:【光影的旅行者-陳澄波百二巨畫展】

陳澄波	臺南市立博物館:【光影的旅行者-陳澄波百二巨畫展】

Q1. : Who is he? He's my favorite	Q6. : Whose work is it? It's Chen Chengbo's work
Q2.: What's his name? He's 陳澄波	Q7. : Who drew it? 陳澄波 drew it.
Q3.: What was he? He was an artist	Q8. : Where can you see it? I can see it in the museum.
Q4.: Where was he born? He was born in Taiwan	Q9. : How do you like it? I like it very much
Q5. : When was he born? He was born in 1895	Q10.: Why do/don't you like it?

He was born in 1895

Work Sheet 工作單

Date(日期): _____ 組別(Team): _____ 姓名(names): _____

- Please follow above and introduce the artist and his/her work by yourself.

Q1. : Who is he? He's 畢卡索	Q6. : Whose work is it? It's 畢卡索's work.
Q2.: What's his name? He's 畢卡索	Q7. : Who drew it? 陳畢卡索 drew it.
Q3.: What was he? He was an artist	Q8. : Where can you see it? I can see it in the museum.
Q4.: Where was he born? He was born in Spain	Q9. : How do you like it? I like it very much.
Q5. : When was he born?	Q10.: Why do/don't you like it? It's very beautiful.

He was born in 1881

沉浸式英文 109-2

Theme I:校園樹木(春)

Title: 陳澄波---作家簡介 & 畫作認識

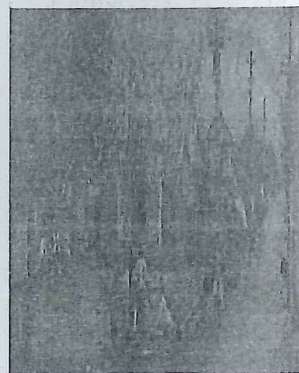
週數 (wks)	日期 (Dates)	主題 (Titles)	備註 (nts)
1.	110.02.24	陳澄波---作家簡介 & 畫作認識	人物介紹

Q & A

- Q1.: Who is he/she? Who are you?
 Q2.: What's his/her/your name?
 Q3.: What was he/she? What are you?
 Q4.: Where was he/she born? Where were you born?
 Q5.: When was he/she born? When were you born?
 Q6.: Whose work is it?
 Q7.: Who drew it?
 Q8.: Where can you see the picture?
 Q9.: How do you like the picture?
 Q10.: Why do/don't you like the picture?



陳澄波



嘉義市立博物館:【光影的旅行-陳澄波百二互動展】

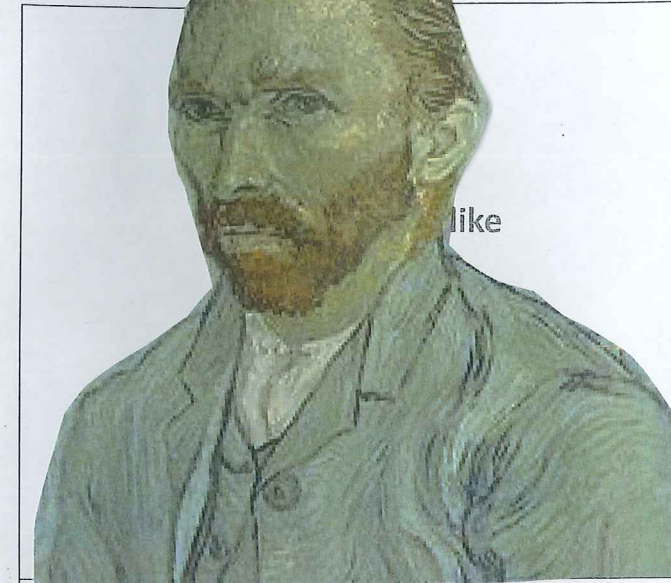
陳澄波	嘉義市立博物館:【光影的旅行-陳澄波百二互動展】

Q1.: Who is he? he is 陳澄波	Q6.: Whose work is it? It's 陳澄波's work
Q2.: What's his name? 陳澄波	Q7.: Who drew it? It's 陳澄波's work
Q3.: What was he? 藝術家	Q8.: Where can you see it? I can see it in the museum.
Q4.: Where was he born? 嘉義	Q9.: How do you like it? 我喜歡他的作品 I like very much
Q5.: When was he born? 1895年 He was born in	Q10.: Why do/don't you like it? It's very beautiful.

Work Sheet 工作單

Date(日期): 110 3/3 組別(Team): 3 姓名(names): Rachel

- Please follow and introduce the artist and his/her work by yourself.



Q1.: Who is he? 梵谷 He's my favorite artist	Q6.: Whose work is it? It's 梵谷's work
Q2.: What's his name? 梵谷	Q7.: Who drew it? It's 梵谷's work
Q3.: What was he? 藝術家	Q8.: Where can you see it? I can see it in museum.
Q4.: Where was he born? 荷蘭	Q9.: How do you like it? I like it
Q5.: When was he born? He was born in 3月30日	Q10.: Why do/don't you like it? I like very much



Theme I:校園樹木(春)

Title: 陳澄波---作家簡介 & 畫作認識

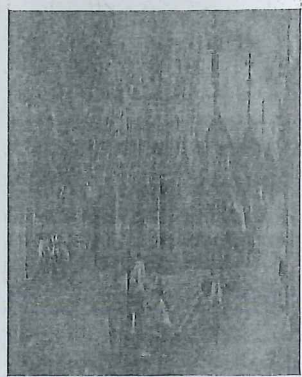
週數 (wks)	日期 (Dates)	主題 (Titles)	備註 (nts)
1.	110.02.24	陳澄波---作家簡介 & 畫作認識	人物介紹

Q & A


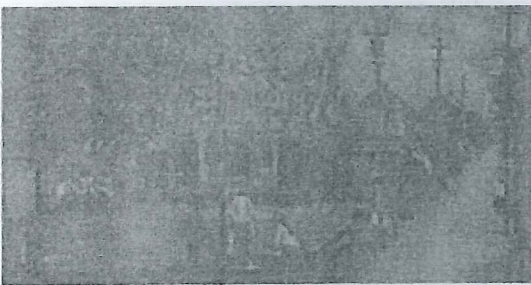
- Q1. : Who is he/she? Who are you?
- Q2. : What's his/her/your name?
- Q3. : What was he/she? What are you?
- Q4. : Where was he/she born? Where were you born?
- Q5. : When was he/she born? When were you born?
- Q6. : Whose work is it?
- Q7. : Who drew it?
- Q8. : Where can you see the picture?
- Q9. : How do you like the picture?
- Q10.: Why do/don't you like the picture?



陳澄波
www.thaiaia.edu.tw



嘉義市立博物館:【光影的旅行者-陳澄波百二巨觀展】

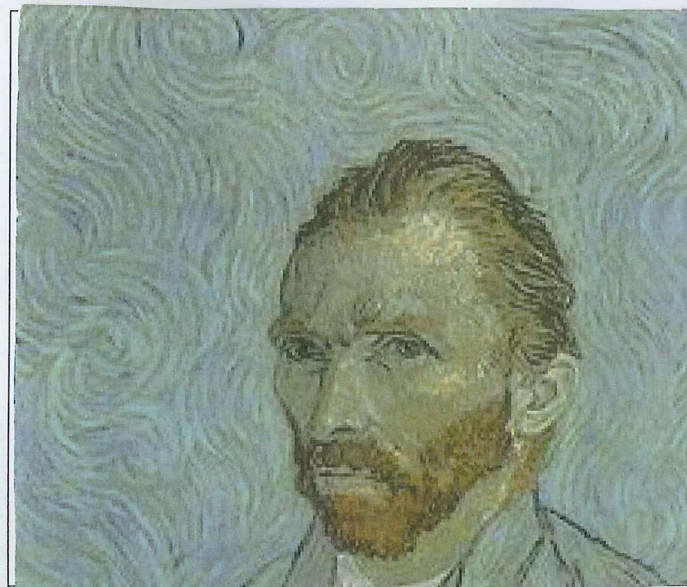
	
陳澄波	嘉義市立博物館:【光影的旅行者-陳澄波百二巨觀展】

Q1. : Who is he? 陳澄波 He's m y fav write artist	Q6. : Whose work is it? It's 陳澄波's work.
Q2.: What's his name? 陳澄波	Q7. : Who drew it? 陳澄波 drew it.
Q3.: What was he? r	Q8. : Where can you it? I can see it in the museum.
Q4.: Where was he born? He was an artist	Q9. : How do you like it? I like it very much.
Q5. : When was he born?	Q10.: Why do/don't you like it?

He was born in 1895 It's very beautiful.

Date(日期): 110.3.3 W 組別(Team): Kiki 姓名(names): Kiki

- Please follow above and introduce the artist and his/her work by yourself.



Q1. : Who is he? 梵谷 He's 梵谷	Q6. : Whose work is it? It's 梵谷's work.
Q2.: What's his name? 梵谷 He's 梵谷	Q7. : Who drew it? 梵谷 drew it.
Q3.: What was he? 藝術家 he wa an artist	Q8. : Where can you see it? I can see it in the museum
Q4.: Where was he born? 荷蘭 He was an artist	Q9. : How do you like it? I like it very much.
Q5. : When was he born? 1890 He was born in 1890	Q10.: Why do/don't you like it? It's very beautiful.

沉浸式英文 109-2

Theme I: 校園樹木(春)

Title: 陳澄波---作家簡介 & 畫作認識

週數 (wks)	日期 (Dates)	主題 (Titles)	備註 (nts)
1.	110.02.24	陳澄波---作家簡介 & 畫作認識	人物介紹

Q & A

Q1.: Who is he/she? Who are you?

Q2.: What's his/her/your name?

Q3.: What was he/she? What are you?

Q4.: Where was he/she born? Where were you born?

Q5.: When was he/she born? When were you born?

Q6.: Whose work is it?

Q7.: Who drew it?

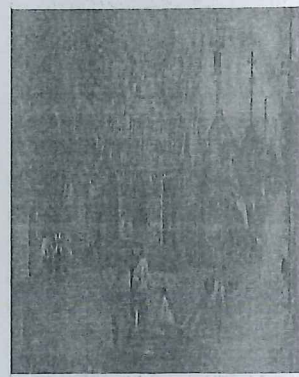
Q8.: Where can you see the picture?

Q9.: How do you like the picture?

Q10.: Why do/don't you like the picture?



陳澄波



臺南市立博物館:【光影的旅行者-陳澄波百二巨畫展】

	
陳澄波	臺南市立博物館:【光影的旅行者-陳澄波百二巨畫展】

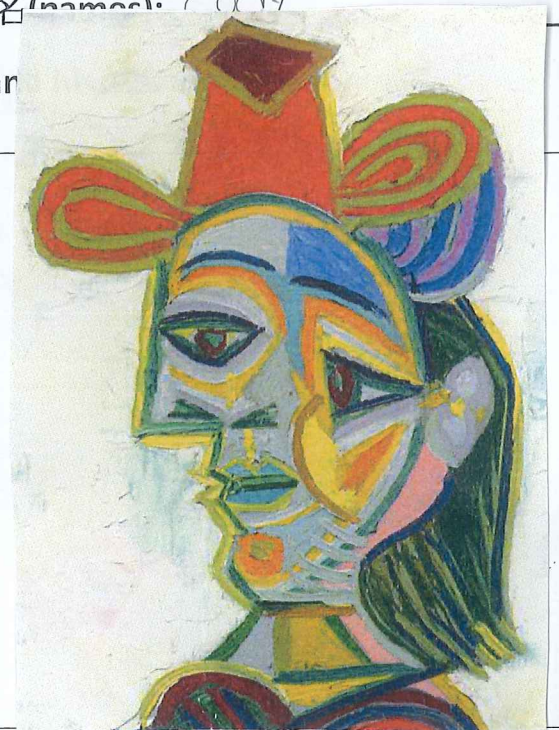
Q1.: Who is he?	Q6.: Whose work is it?
he is 陳澄波	It's 陳澄波 work.
Q2.: What's his name?	Q7.: Who drew it?
his name's 陳澄波	陳澄波 drew it.
Q3.: What was he?	Q8.: Where can you see it?
藝術家	I can see it in the museum.
Q4.: Where was he born?	Q9.: How do you like it?
He was born in Taiwan	I like it very much.
Q5.: When was he born?	Q10.: Why do/don't you like it?

He was born in 1895年 It's very beautiful

Work Sheet 工作單

Date(日期): 110.03.03 組別(Team): _____ 姓名(Name): Cody

● Please follow above and introduce the artist and



Q1.: Who is he?	Q6.: Whose work is it?
藝術家	it is 畢卡索 work
Q2.: What's his name?	Q7.: Who drew it?
his name's 畢卡索	畢卡索 drew it.
Q3.: What was he?	Q8.: Where can you see it?
藝術家	I can see it in the museum
Q4.: Where was he born?	Q9.: How do you like it?
西班牙	I like it very much
Q5.: When was he born?	Q10.: Why do/don't you like it?
1881年	It's very beautiful

沉浸式英文 109-2

Theme I:校園樹木(春)

Title: 陳澄波---作家簡介 & 畫作認識

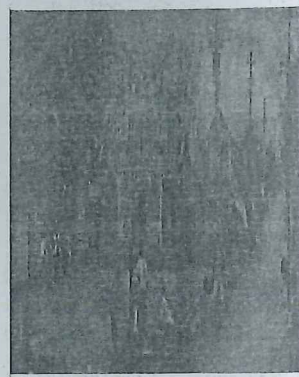
週數 (wks)	日期 (Dates)	主題 (Titles)	備註 (nts)
1.	110.02.24	陳澄波---作家簡介 & 畫作認識	人物介紹

Q & A

- Q1. : Who is he/she? Who are you?
- Q2. : What's his/her/your name?
- Q3. : What was he/she? What are you?
- Q4. : Where was he/she born? Where were you born?
- Q5. : When was he/she born? When were you born?
- Q6. : Whose work is it?
- Q7. : Who drew it?
- Q8. : Where can you see the picture?
- Q9. : How do you like the picture?
- Q10.: Why do/don't you like the picture?



陳澄波

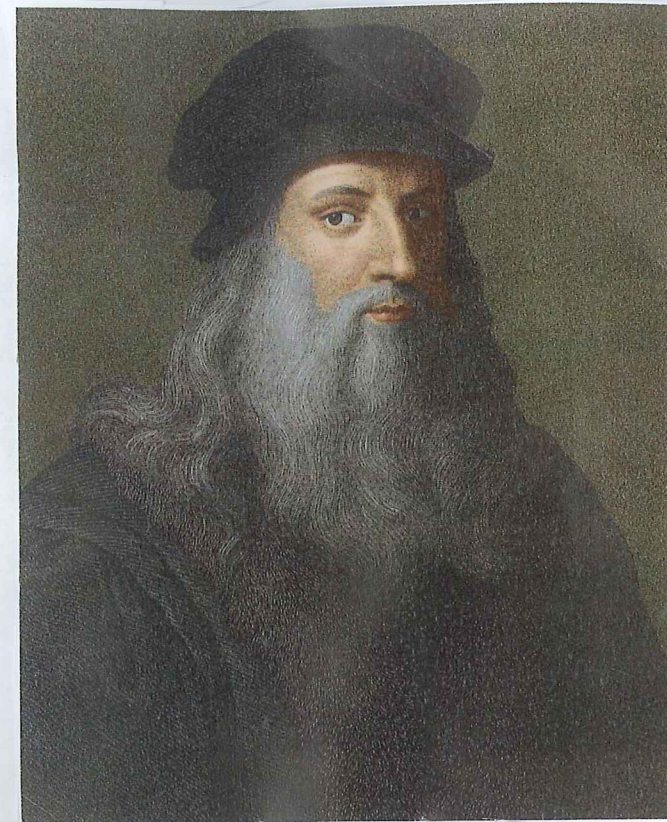


嘉義市立博物館:【光影的旅行者-陳澄波百二巨畫展】

陳澄波	嘉義市立博物館:【光影的旅行者-陳澄波百二巨畫展】

Q1. : Who is he?	Q6. : Whose work is it?
He's my favorite.	(is) 陳澄波 work.
Q2.: What's his name?	Q7. : Who drew it?
陳澄波	陳澄波 drew.
Q3.: What was he?	Q8. : Where can you it?
He was an artist	I can see it in the museum.
Q4.: Where was he born?	Q9. : How do you like it?
He was born in Taiwan.	I like it very much.
Q5. : When was he born?	Q10.: Why do/don't you like it?
He was born in 1895.	It's very beautiful.

He was born in 1895. It's very beautiful.



sheet 工
e 姓名
rtist a



甄

Q1. : Who is he?	Q6. : Whose work is it?
He's my favorite.	達文西
Q2.: What's his name?	Q7. : Who drew it?
達文西	達文西
Q3.: What was he?	Q8. : Where can you see it?
He was an artist.	I can see in the museum
Q4.: Where was he born?	Q9. : How do you like it?
He was born in 義大利.	I like it very much.
Q5. : When was he born?	Q10.: Why do/don't you like it?
He was born in 1452	I like it very beautiful

Theme I: 校園樹木(春)

Title: 陳澄波---作家簡介 & 畫作認識

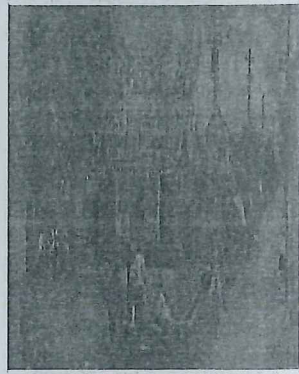
週數 (wks)	日期 (Dates)	主題 (Titles)	備註 (nts)
1.	110.02.24	陳澄波---作家簡介 & 畫作認識	人物介紹

Q & A

- Q1.: Who is he/she? Who are you?
- Q2.: What's his/her/your name?
- Q3.: What was he/she? What are you?
- Q4.: Where was he/she born? Where were you born?
- Q5.: When was he/she born? When were you born?
- Q6.: Whose work is it?
- Q7.: Who drew it?
- Q8.: Where can you see the picture?
- Q9.: How do you like the picture?
- Q10.: Why do/don't you like the picture?



陳澄波
臺南市立博物館

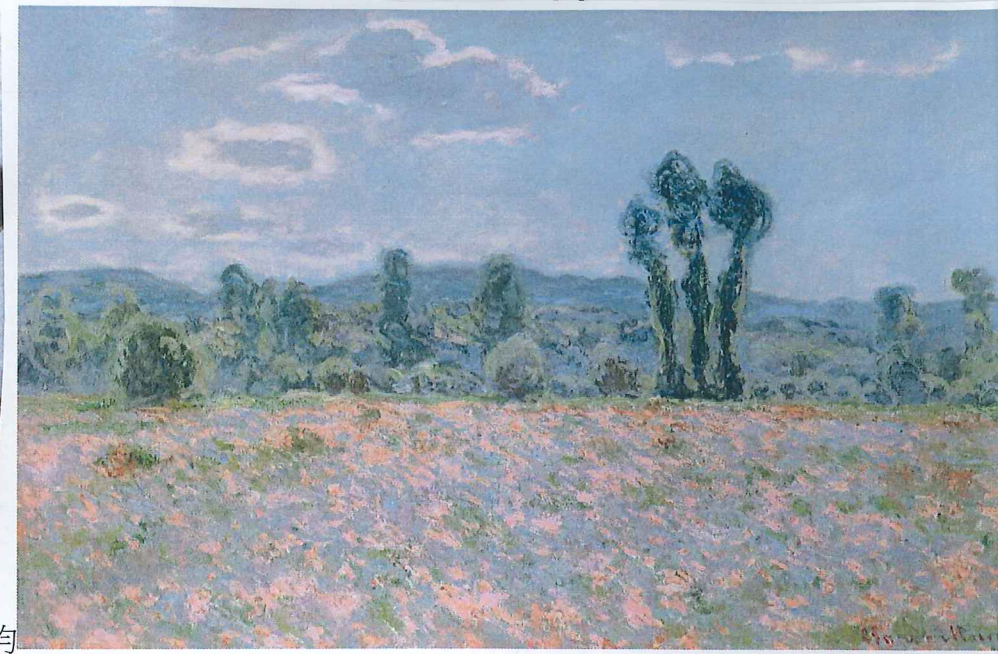


臺南市立博物館:【光影的旅行者-陳澄波百二互動展】

陳澄波	臺南市立博物館:【光影的旅行者-陳澄波百二互動展】

Q1.: Who is he? He's my favorite artist.	Q6.: Whose work is it? It's 陳澄波 work
Q2.: What's his name? He's 陳澄波	Q7.: Who drew it? It's 陳澄波 drew it
Q3.: What was he? He was an artist.	Q8.: Where can you see it? I can see it in the museum.
Q4.: Where was he born? He was born in Taiwan.	Q9.: How do you like it? I like it very much
Q5.: When was he born? He was born in 1895	Q10.: Why do/don't you like it? It's very beautiful.

Please follow above and introduce the artist and his/her work by yourself.



Q1 He's my favorite artist.	It's 莫內's work
Q2.: What's his name? He's 莫內	Q7.: Who drew it? It's 莫內 drew it
Q3.: What was he? He was an artist.	Q8.: Where can you see it? I can see it in the museum.
Q4.: Where was he born? He was born in 法國	Q9.: How do you like it? I like it very much.
Q5.: When was he born? He was born in 1840	Q10.: Why do/don't you like it? It's very beautiful.