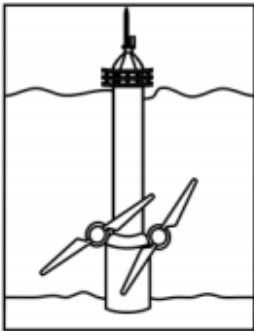


Renewable or Non-Renewable?

Some sources of energy are renewable and some are not. Non-renewable sources are not environmentally friendly and are not replaced easily—we may run out of some of them in time.

Identify which below are renewable and which are non-renewable :

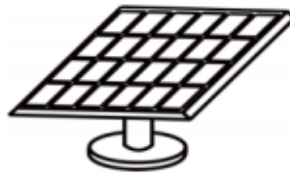
Put an R for Renewable or an N for Non-Renewable under each of the energy source below:



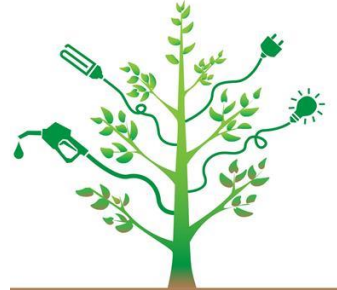
Oceans—Tidal



Geo-Thermal /Earth Heat



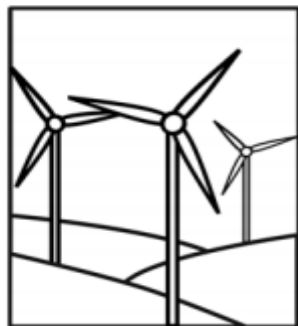
Solar (Sun)



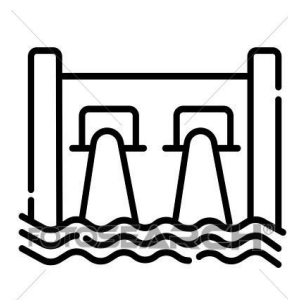
Bioenergy 生質能



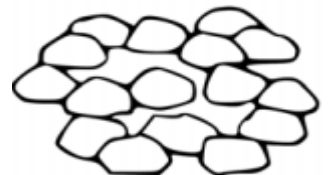
Nuclear



Wind



Hydro 水力



Coal
