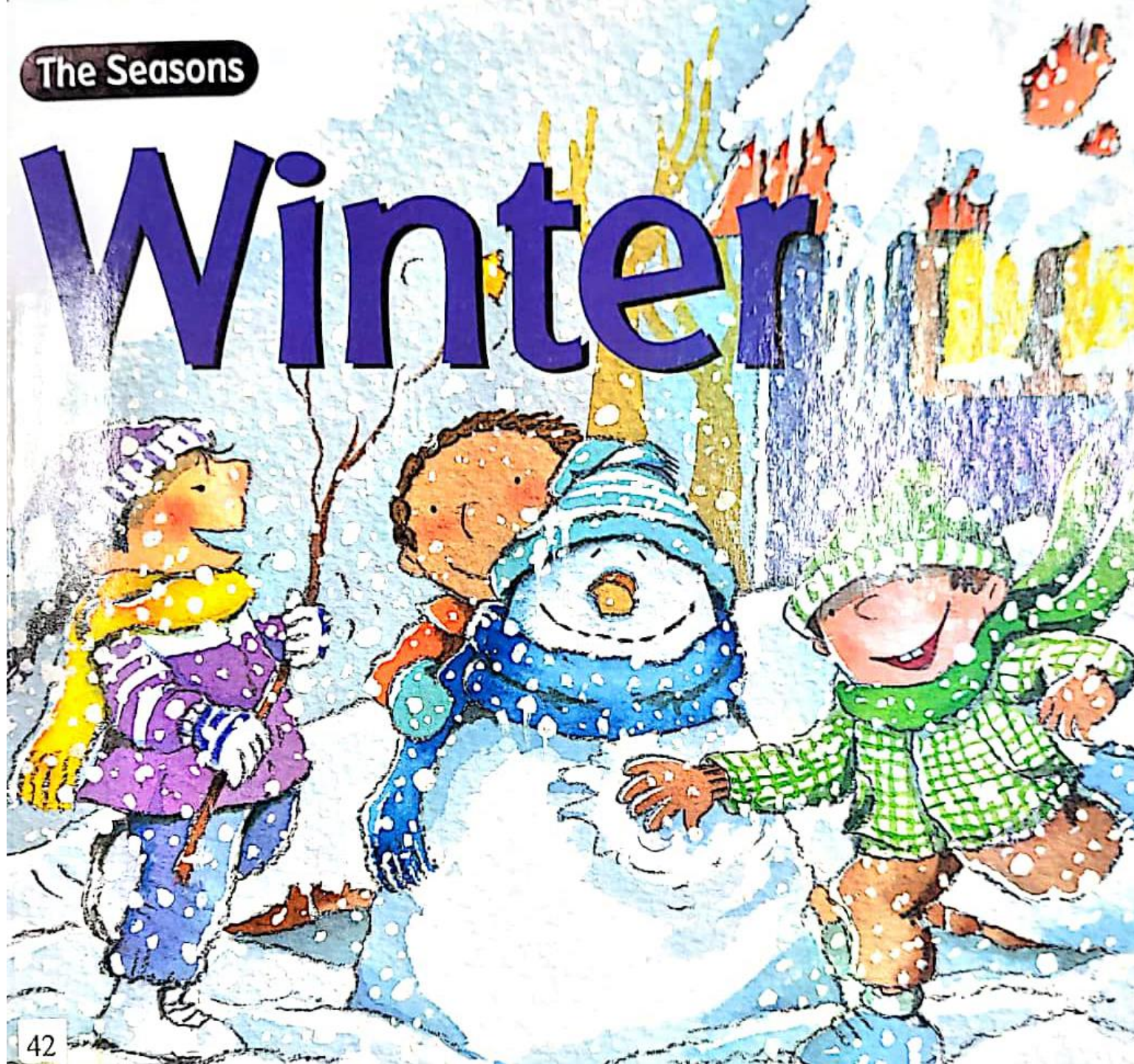


Winter





It's *cold*, it's cloudy, and there is a gray wet haze that covers everything. It is the coldest season of the year and it comes after fall. Can you guess which one it is?



It's snowing!
In a few hours the
landscape will be all
white.

We can go outside
and build a
snowman. We'll have
to wear gloves,
because snow is very,
very cold!



It is so cold that water *freezes*
in lakes and rivers.
Where do fish go then?
If you look carefully, maybe you'll
see one!





The bear spends all winter "sleeping" in its den. This is called *hibernating*. Among the little animals on this page, three hibernate and two do not. Guess which.



mole



hedgehog



dormouse



rabbit



marmot

In the woods, birds eat the few fruits
that grow in winter, like the ones in the
holly tree and the *mistletoe*.

Can you find them?

Here is a clue: holly tree berries are red and
mistletoe berries are green.



How do humans manage to spend the winter?



Surely you know three ways to get a house warm. Mmmm! It feels so good!



When the ground is covered in *SNOW*, you may go skiing or sledding. Snow is so slippery it is hard to keep your balance.





Would you like to go
to the market? In
winter, you may find
olives, apples, leeks,
tangerines,
artichokes,
cauliflowers . . .
and what



In the North Pole and the South Pole
it is always cold, water is extremely
cold, and the land is covered in ice
and *SNOW*. It seems like it is
winter all the time!



Here you are—a lot of warm winter *clothes* so you won't be cold even if you go to the North Pole. Do you know the name of each item of clothing?



The Christmas season
is near and we
get ready to
celebrate it!



Christmas is here. Our home
is full of lights and presents !





The *end of the year* is near too. Another year is over and a new one begins. A calendar has twelve months. Do you know all of them?



Close your eyes and think what
colors remind you of winter.
White, gray, blue . . . pink?





+

+

+

+

+

+

+

+

coat



scarf



cap



clothes

hot tea



hot pot



food

holly tree



fallen leaves



plant

Santa



reindeer

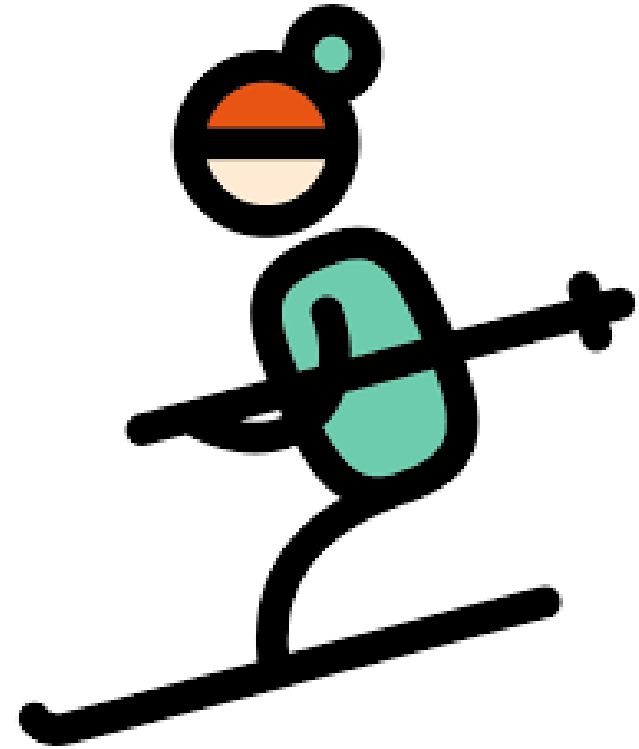


Christmas

build a snowman



go skiing



activities

heater

