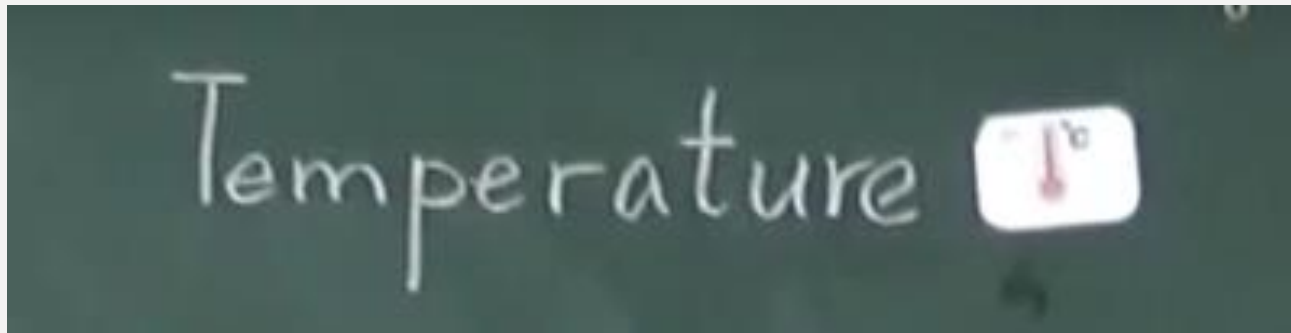


融化

I can melt ice into water



•Q: What is temperature?



T : When it is very cold , water will become?

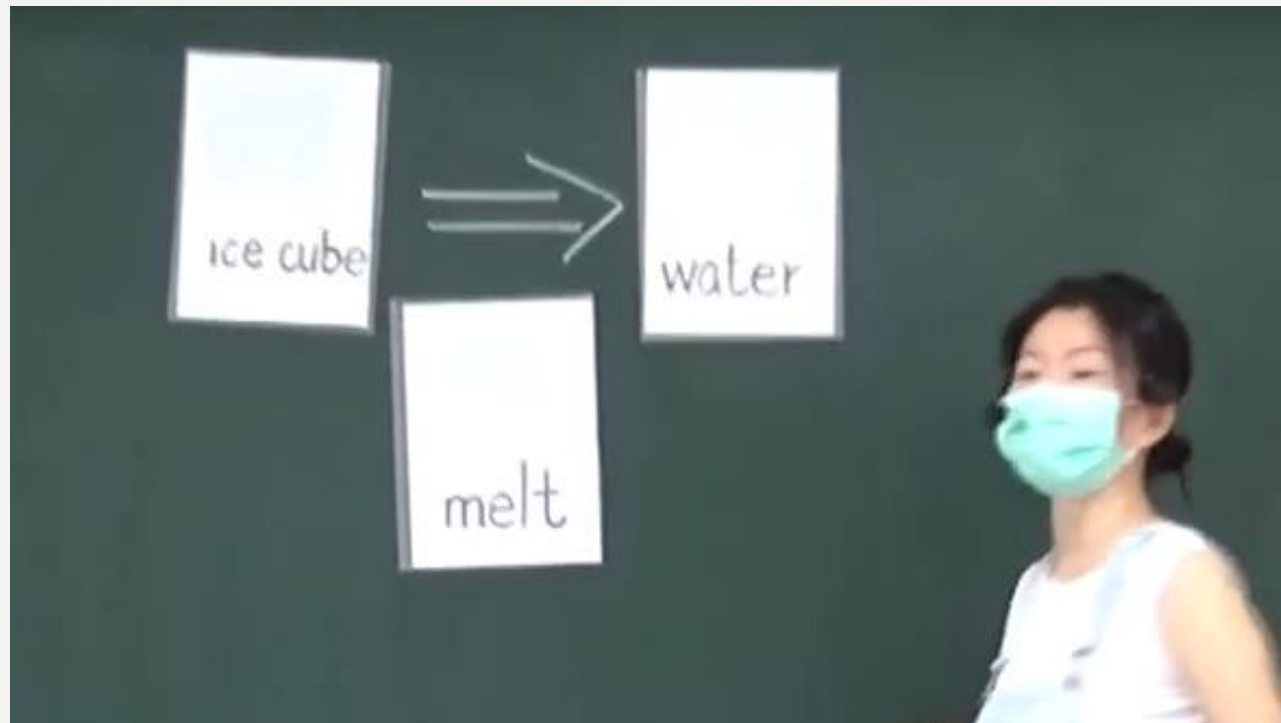
S : ice.



•Q: What is melt?



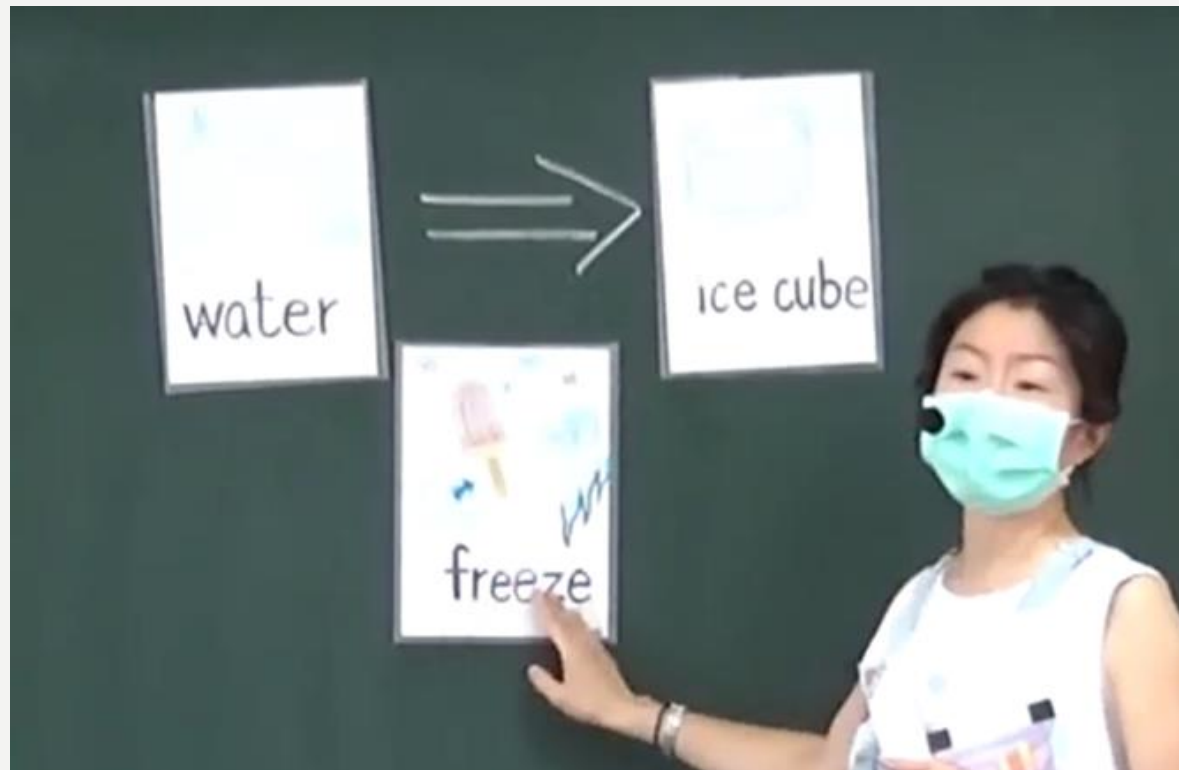
Ice becomes **water** called melt.



•Q: What is freeze?



Water becomes **ice** called freeze.



How do you melt ice to water ?



hot

遇冷/遇熱



Just wait?



放在手上
(put it in the hand)
摩擦生熱
放到水裡





發器材，交代任務



1. Mark the ice. (藍)
2. Weight the ice.

搭配學習單，進行記錄



1. Mark the ice.



2. Weight the ice.





How do you melt ice to water ?

一分鐘思考，分組討論方法，並發表





How do you melt ice to water ?



三分鐘執行各組採用的方法



Try to see which method melts faster.



in the sun



shake



put in hot water

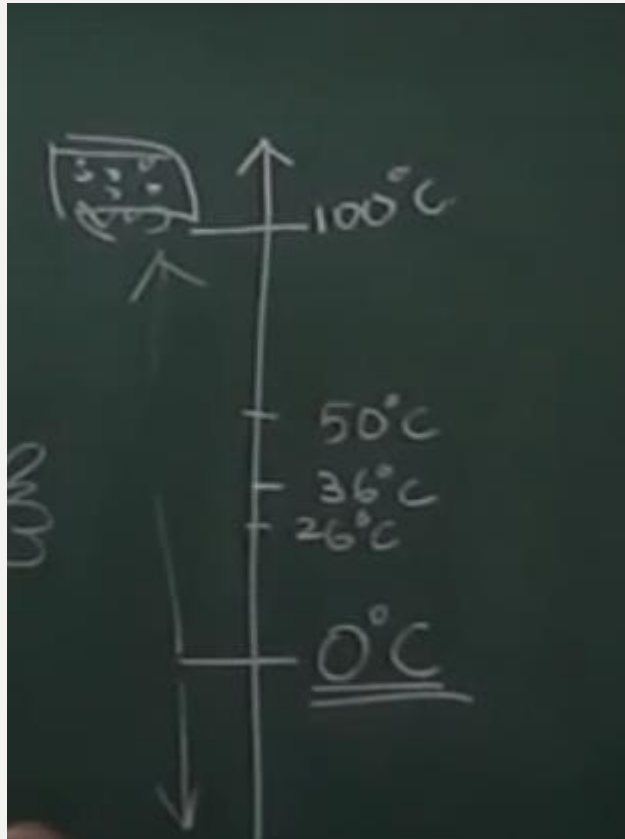


- **Compare the difference between ice and water.**

	ice	water
△□○ shape	○	×
space	○	○
color	×	×
😊 taste	×	×
👃 smell	×	×



- **Compare the difference between ice and water.**



補充說明：room temperature
body temperature



發器材，交代任務

1. Mark the ice. (紅)
2. Weight the ice.

搭配學習單，進行記錄





- **Compare the difference between ice and water.**

	ice	water	
weight			No change
volume	bigger	smaller	

冰和水都是同一種物質，只是形態不同，它們都占有空間、具有重量。

教學時間：**40**分